



MiniMatcher series

Cost-effective desktop LED color assessment cabinets



MiniMatcher MM-2e/LED (left) and MM-4e/LED (right)

GTI MiniMatchers help with the assessment and communication of colors. They are ideal for checking coatings, textiles, packaging, cosmetics and more.

All MiniMatcher use GTI's LED technology, meet industry standards and have a product conformity certificate (NIST traceable).

MiniMatcher systems offer standardized conditions for visual color observation and ensure reliable processes in color assessment and communication. This reduces costs by less errors and faster decisions.

MiniMatcher 1e und 2e LED models

These models feature three LED light sources: D65 daylight, 2700K house light and 4000K shop light. The D65 LED source conforms to the ASTM D1729 viewing standard. The 2700K and 4000K LED sources are used to verify color in an end-use environment and to test for metamerism. An optional fourth source is a LED black light (UV) with 315 - 400 nm. The lamps are controlled by toggle switches. A diffuser is also included.

MiniMatcher 4e, 2436e, 2448e and 2460e LED models

These larger MiniMatcher models have 5 LED light types: D50 or D65 standard light, 2700K house light, 3000K and 4000K store light and a black light (UV) with 315–400 nm. Alternative light types can be exchanged on request.

Illuminated buttons show the selected light source. Programmable light sequences help when testing metamerism effects. The order and lighting time of each light type can be freely programmed. An hour counter for the daylight type and diffuser are included.

MiniMatcher features include:

- D65 or D50 LED standard light
- High color rendering CRI (Ra>98)
- Affordable
- Low maintenance
- Many different models and sizes
- Meets industry standards
- Available with 3 to 5 light types
- includes conformity certificate (NIST traceable)
- Easy to use and quick to set up



cmlite

Product specifications

MM-1e/LED and MM-2e/LED characteristics

Model	Viewing area h x w x d	Hour counter Daylight	Switches	Light sequence Programmable
MM-1e/LED	36 cm x 61 cm x 34 cm	Optional	Toggle	No
MM-2e/LED	33 cm x 46 cm x 25 cm	Optional	Toggle	No

Standard light sources: LED daylight (D65 or D50), LED home light 2700K, LED shop light 4000K
Optional light sources: LED black light (UV) 315–400 nm, LED shop light 3000K (MM-1/LED only)

MM-4e/LED, MM-2436e/LED, MM-2448e/LED, MM-2460e/LED characteristics

Model	Viewing area h x w x d	Hour counter Daylight	Switches	Light sequence Programmable
MM-4e/LED	36 cm x 61 cm x 41 cm	Included	Push button	Yes
MM-2436e/LED*	58 cm x 91 cm x 58 cm	Included	Push button	Yes
MM-2448e/LED*	58 cm x 122 cm x 58 cm	Included	Push button	Yes
MM-2460e/LED*	58 cm x 152 cm x 58 cm	Included	Push button	Yes

Standard light sources: D65 LED daylight; 2700K LED home light; 3000K and 4000K shop light and 315–400 nm LED black light (UV)

Optional light sources: D50 LED daylight, 3500k LED shop light

*The MM-2436e/LED, 2448e/LED and 2460e/LED are also available with 3 light types (D50 or D65 LED, 2700K LED and 4000K LED. Control by means of toggle switches, UV LED optional as 4th light type available.



Physical dimensions

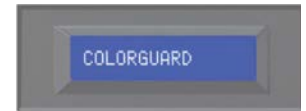
Model	Size h x w x d
MM-1e/LED	48 cm x 67 cm x 42 cm
MM-2e/LED	46 cm x 52 cm x 34 cm
MM-4e/LED	48 cm x 67 cm x 48 cm
MM-2436e/LED	73 cm x 98 cm x 66 cm
MM-2448e/LED	70 cm x 128 cm x 66 cm
MM-2460e/LED	70 cm x 159 cm x 66 cm

From top to bottom: MM-2436e/LED, MM-2448e/LED, and MM-2460e/LED. Bottom row from left to right: MM-4e/LED, MM-2e/LED, and MM-1e/LED.

Optional Accessories

ColorGuard 3.0

Available for all models with 5 light types. Displays operating hours for all light types.



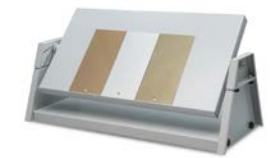
FX Lighting

For the evaluation of special effect paints.



Sample table

45 degree sample table and variable sample table for flat samples.



Matt black Panel inserts

For color assessment of samples with very dark and/or highly glossy surfaces.

GTI is a leading manufacturer of color viewing systems with tight tolerances for critical color viewing, color communication and color matching. An in-house spectroradiometric light laboratory and the 100% measurement and testing process guarantee the precision in all products. All devices are delivered with a certificate of conformity (NIST traceable).

